

MAC 2

SEMI AUTOMATIC SHOTGUN OWNERS MANUAL



MILITARY
ARMAMENT
CORP





MAC 2 RECOMENDATIONS

- Your MAC 2 shotgun uses 2 3/4" and 3" shells only.
- We suggest to use 1350 FPS minimum velocity and quality brand ammunitions.
- Minimum 1 1/8 oz shells is suggested.
- 100 rounds of 1350+ FPS ammo for a break in period. Your shotgun will cycle lighter loads well after completing the proper break in period



BASIC SAFETY RULES

1. NEVER POINT A FIREARM AT SOMETHING THAT IS NOT SAFE TO SHOOT.

Never let the muzzle of a firearm point at any part of your body or at another person. This is especially important when loading or unloading the firearm. When you are shooting at a target, know what is behind it. Some bullets can travel over a mile. If you miss your target or if the bullet penetrates the target, it is your responsibility to ensure that the shot does not cause unintended injury or damage.

2. ALWAYS TREAT A FIREARM AS IF IT WERE LOADED.

Never assume that a firearm is unloaded. The only certain way to ensure that a firearm has the chamber empty is to open the chamber and visually and physically examine the inside to see if a round is present. Unloading the magazine only will not guarantee that a firearm is unloaded or can not fire. Shotguns and rifles can be checked by removing all rounds and by then opening and inspecting the chamber for visual inspection of the chamber for any remaining rounds.

3. STORE YOUR FIREARM SO THAT CHILDREN CAN NOT GAIN ACCESS TO IT.

It is your responsibility to ensure that children under the age of 18 or other unauthorized persons do not gain access to your firearm. To reduce the risk of accidents involving children, unload your firearm, lock it and store the ammunition in a separate locked location. Please note that devices intended to prevent accidents - for example, cable locks, chamber plugs, etc, - may not prevent use or misuse of your firearm storage in a steel gun safe may be more appropriate to reduce the likelihood of intentional misuse of a firearm by an unauthorized child or person.

4. NEVER SHOOT AT WATER OR AT A HARD SURFACE.

Shooting at the surface of water or at a rock or other hard surface increases the chance of ricochets or fragmentation of the bullet or shot, which can result in the projectile striking an unintended or peripheral target.



5. KNOW THE SAFETY FEATURES OF THE FIREARM YOU ARE USING, BUT REMEMBER: SAFETY DEVICES ARE NOT A SUBSTITUTE FOR SAFE HANDLING PROCEDURES.

Never rely solely on a safety device to prevent an accident. It is imperative that you know and use the safety features of the particular firearm you are handling, but accidents can best be prevented by following the safe handling procedures described in these safety rules and elsewhere in the product manual. To further familiarize yourself with the proper use of this or other firearms, take a Firearms Safety Course taught by an expert in firearms use and safety procedures.

6. PROPERLY MAINTAIN YOUR FIREARM.

Store and carry your firearm so that dirt or lint does not accumulate in the working parts. Clean and oil your firearm, following the instructions provided in this manual, after each use to prevent corrosion, damage to the barrel or accumulation of impurities which can prevent use of the gun in an emergency. Before loading your firearm, always check the barrel internal part and the chamber to ensure that they are clean and free from obstructions. Firing with an obstruction in the barrel or chamber can rupture the barrel and injure you or others near by the event you hear an unusual noise when shooting, stop firing immediately, engage the manual safety and unload the firearm. Make sure the chamber and barrel are free from any obstruction, like a bullet blocked inside the barrel due to defective or improper ammunition.

7. USE PROPER AMMUNITION.

Only use factory loaded, new ammunition manufactured to industry specifications: CIP (Europe and elsewhere), SAAMI® (U.S.A.). Be certain that each round you use is in the proper caliber or gauge and type for the particular firearm. The caliber or gauge of the firearm is clearly marked on the barrels of shotguns and on the slide or barrel of pistols. The use of reloaded or remanufactured ammunition can increase the likelihood of excessive cartridge pressures, case head ruptures or other defects in the ammunition that can cause damage to your firearm and injury to yourself or others nearby.



8. ALWAYS WEAR PROTECTIVE GLASSES AND EARPLUGS WHEN SHOOTING.

The chance that gas, gunpowder or metal fragments will blow back and injure a shooter who is firing a gun is rare, but the injury that can be sustained in such circumstances can be severe, including the possible loss of eye sight. A shooter must always wear impact resistant shooting glasses when firing any firearm. Earplugs or other high quality hearing protectors help reduce the chance of hearing damage from shooting.

9. NEVER CLIMB A TREE, FENCE OR OBSTRUCTION WITH A LOADED FIREARM.

Open and empty the chamber of your firearm and engage the manual safety catch before climbing or descending a tree or before climbing a fence or jumping over a ditch or other obstruction. Never pull or push a loaded firearm toward yourself or another person. Always unload the firearm, visually and physically check to see that the magazine, loading mechanism and chamber are unloaded and that the bolt is open before handing the firearm to another person. Never take a firearm from another person unless it is unloaded, visually and physically checked to confirm it is unloaded, and the action is open.

10. AVOID ALCOHOLIC BEVERAGES OR JUDGEMENT/REFLEX IMPAIRING MEDICATION WHEN

SHOOTING. Do not drink alcohol and shoot. If you take medication that can impair motor reactions or judgment, do not handle a firearm while you are under the influence of the medication.

11. NEVER TRANSPORT A LOADED FIREARM.

Always unload your firearm before transporting.



WE SPECIFICALLY DISCLAIM ANY RESPONSIBILITY FOR DAMAGE OR INJURY OCCURRING IN CONNECTION WITH. OR AS A RESULT OF THE USE OF FAULTY. OR "REMANUFACTURED," OR HAND-LOADED(RELOADED) AMMUNITION. ADDITIONALLY, WE DISCLAIM ANY RESPONSIBILITY FOR DAMAGE OR INJURY WHICH RESULTS FROM ANY MODIFICATIONS OR CHANGES THAT ARE NOT A PART OF THE FIREARM AS DELIVERED FROM THE FACTORY.

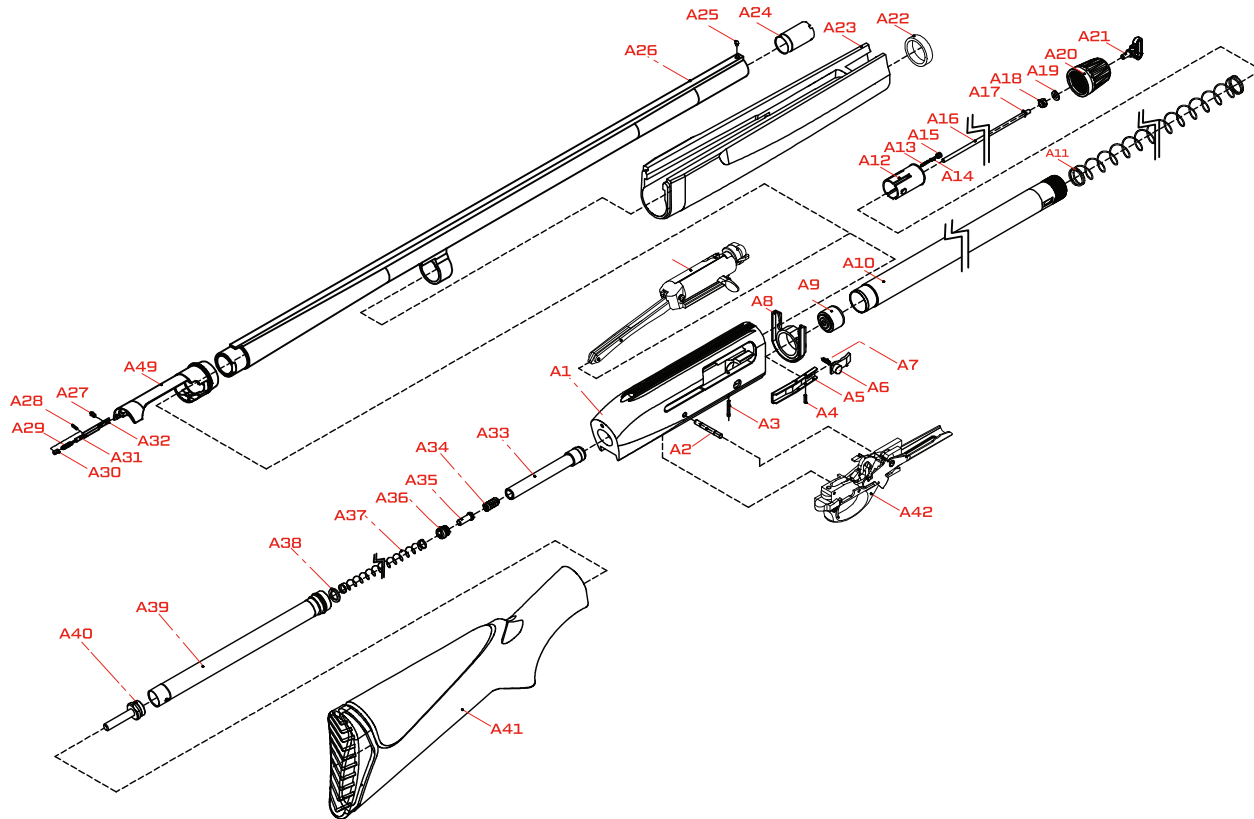
CONGRATULATIONS!!!

Learn to clean your firearm thoroughly and make certain no oil, grease, or other materials are blocking the barrel. Obstructions of any kind can cause damage to the firearm, and may result in serious personal injury to the shooter and/or others nearby. Practice proper firearm maintenance and safety. Make sure all exposed metal surfaces are coated with a thin film of oil, especially after exposure to damp weather. (See proper section of this manual for cleaning instructions. Do not plug barrel or store in a fabric-lined case which will absorb lubricants from the firearm. Before using after storage, follow complete instructions stated in this manual to refamiliarize with the firearm. A thorough inspection should be performed before going into the field. Have your firearm periodically checked by a qualified gunsmith. You are now the owner of the MAC 2 12 gauge shotgun. Your shotgun has an innovative design and is manufactured from high quality materials. With regularly performed maintenance and the use of proper ammunition it will provide you with many years of service. In order to achieve the best performance and reliability from your shotgun, please read and fully understand all of the instructions, safety guidelines, and warnings carefully in this manual. Your shotgun is reliable and safe unless it is handled in a careless or irresponsible manner.

REMEMBER: it is imperative that the firearm handler be fully educated and conscious of the importance of executing proper gun safety rules when operating any firearm. Before using or firing with any live ammunition you should know and fully understand your shotgun's parts, function, and operating mechanisms. So carefully read and fully understand all of the information about the parts and procedures of using the shotgun safely and effectively.



DIAGRAM OF MAC 2 EXPLODED ASSEMBLY

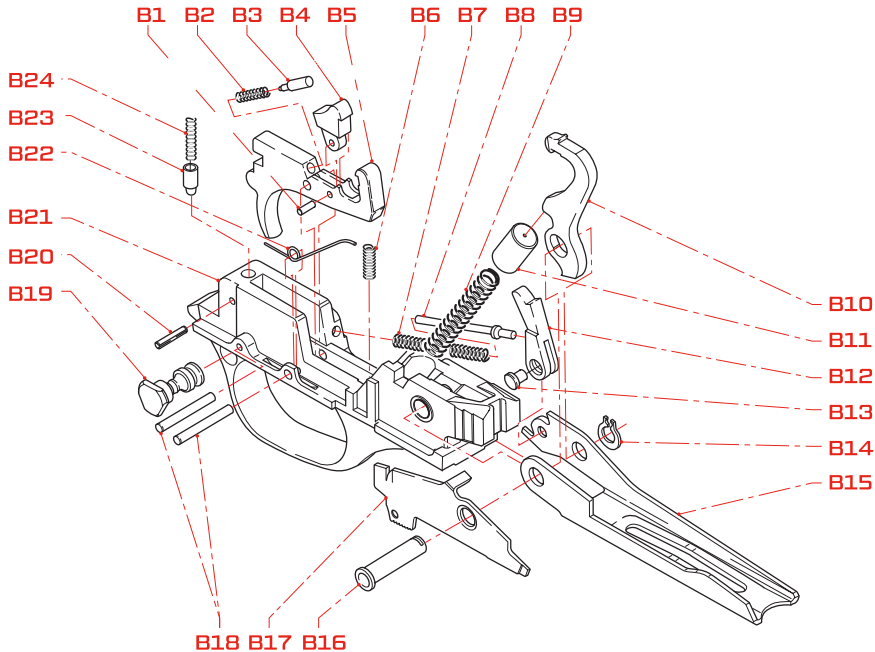


A1 RECEIVER
A2 RECEIVER PIN
A3 LATCH RETAINER PIN
A4 BOLT RELEASE RETAINER PIN
A5 LATCH
A6 BOLT RELEASE
A7 BOLT RELEASE SPRING
A8 FOREARM BEZEL
A9 MAGAZINE FOLLOWER
A10 MAGAZINE TUBE
A11 MAGAZINE SPRING
A12 MAGAZINE SPRING PLUG
A13 FOREARM NUT SPRING
A14 FOREARM NUT PIN
A15 FOREARM NUT SCREW
A16 ROUND LIMITER
A17 ROUND LIMITER STOP
A18 SLING SWIVEL NUT
A19 SLING SWIVEL WASHER
A20 MAGAZINE NUT
A21 SLING SWIVEL

A22 FOREARM SPACER WASHER
A23 FOREARM
A24 MOBILE CHOKE
A25 FRONT SIGHT
A26 BARREL
A27 SPRING ASSISTED EJECTOR SCREW
A28 SPRING ASSISTED EJECTOR PIN
A29 SPRING ASSISTED EJECTOR SPRING
A30 SPRING ASSISTED EJECTOR BODY
A31 SPRING ASSISTED EJECTOR PIN
A32 SPRING ASSISTED EJECTOR EXTRACTOR
A33 RECOIL SPRING BUFFER
A34 RECOIL SPRING BUFFER SPRING
A35 RECOIL SPRING BUFFER PIN
A36 RECOIL SPRING BUFFER CAP
A37 RECOIL SPRING
A38 RECOIL SPRING BASE
A39 RECOIL SPRING TUBE
A40 RECEIVER CONNECTOR SCREW
A41 STOCK
A42 FIRE CONTROL GROUP



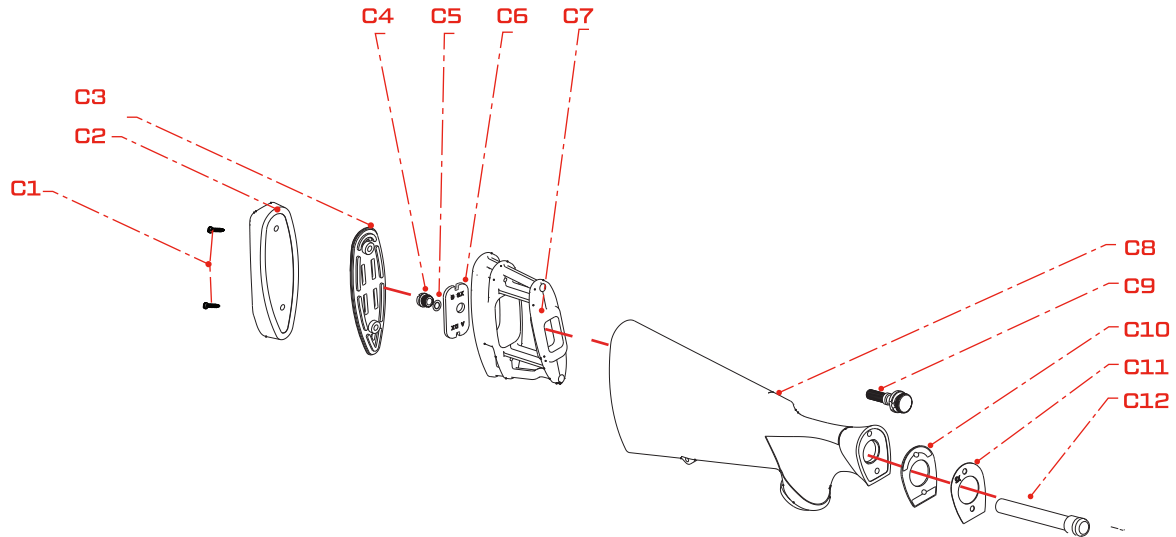
DIAGRAM OF MAC 2 FIRE CONTROL GROUP



- B1 DISCONNECTOR PIN
- B2 DISCONNECTOR SPRING
- B3 DISCONNECTOR PLUNGER
- B4 DISCONNECTOR
- B5 TRIGGER
- B6 TRIGGER SPRING
- B7 LIFTER ACTUATOR SPRING
- B8 LIFTER ACTUATOR SPRING PLUNGER
- B9 HAMMER SPRING
- B10 HAMMER
- B11 HAMMER SPRING CAP
- B12 LIFTER ACTUATOR LEVER
- B13 LIFTER ACTUATOR LEVER PIN
- B14 LIFTER PIN SNAP RING
- B15 LIFTER
- B16 LIFTER PIN
- B17 MAGAZINE RELEASE LEVER
- B18 TRIGGER PIN
- B19 SAFETY BUTTON
- B20 SAFETY SPRING RETAINER PIN
- B21 TRIGGER GUARD
- B22 MAGAZINE RELEASE LEVER SPRING
- B23 SAFETY PLUNGER
- B24 SAFETY PLUNGER SPRING



DIAGRAM OF MAC 2 STOCK ASSEMBLY

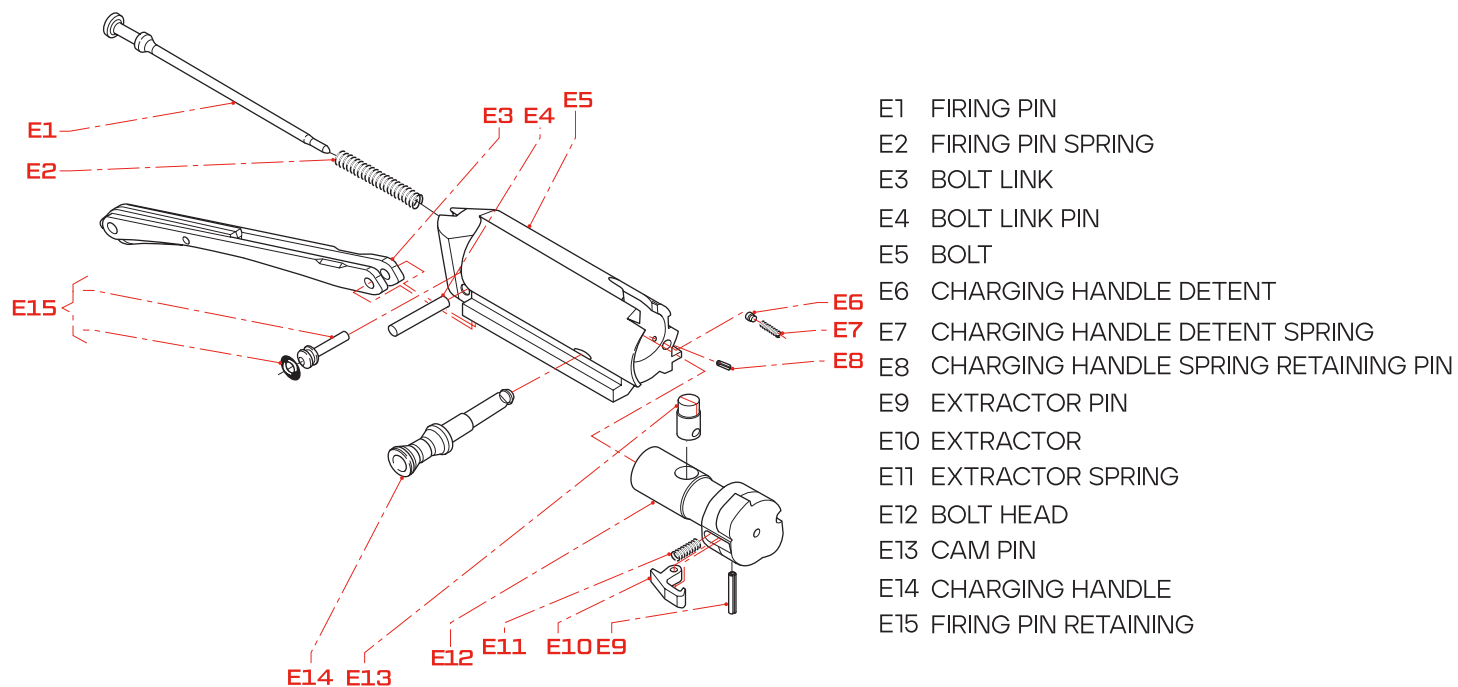


C1 RECOIL PAD SCREW
 C2 RECOIL PAD
 C3 RECOIL PAD SPACER
 C4 STOCK RETAINING NUT
 C5 STOCK RETAINING WASHER
 C6 STOCK RETAINING CANT PLATE

C7 STOCK SHIM
 C8 STOCK
 C9 RECEIVER CONNECTOR SCREW
 C10 CAST SHIM
 C11 DROP SHIM
 C12 RECOIL SPRING TUBE



DIAGRAM OF MAC 2 BOLT CARRIER ASSEMBLY



ASSEMBLY (FROM PACKAGED GUN)

Components of the package (fig. 1):

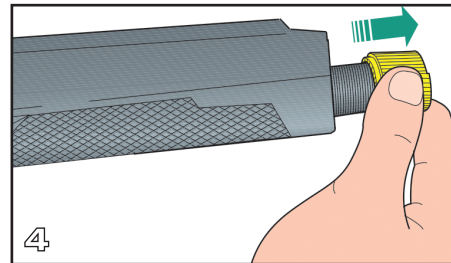
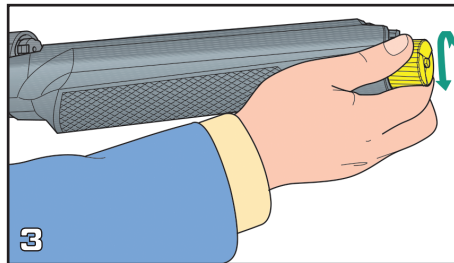
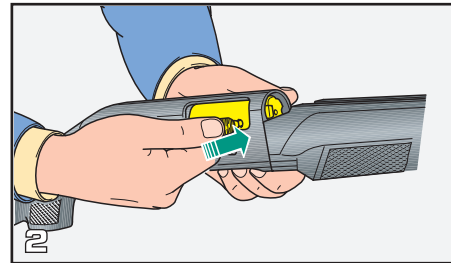
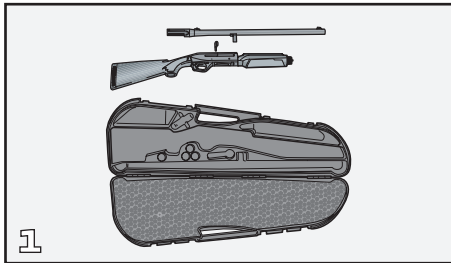
a) stock-receiver-bolt-fore-end unit

b) barrel-breech unit

Assembly procedure

1) Insert the charging handle into the breech bolt unit (fig. 2).

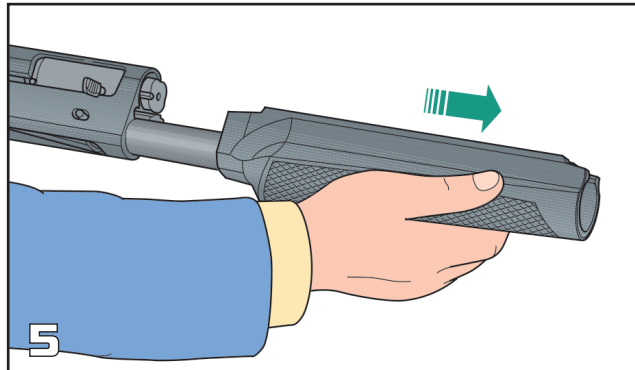
2) Unscrew the forearm cap and remove from the magazine tube (figs. 3-4).



For models equipped with short tube magazine plus magazine tube extension (magazine tube in two pieces), the extended magazine tube is coming off together when unscrewing the forearm cap.

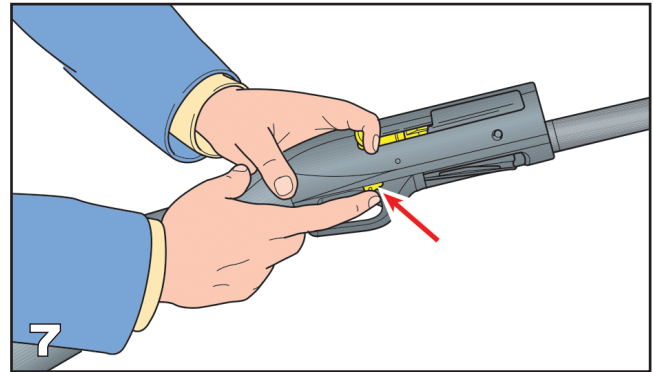
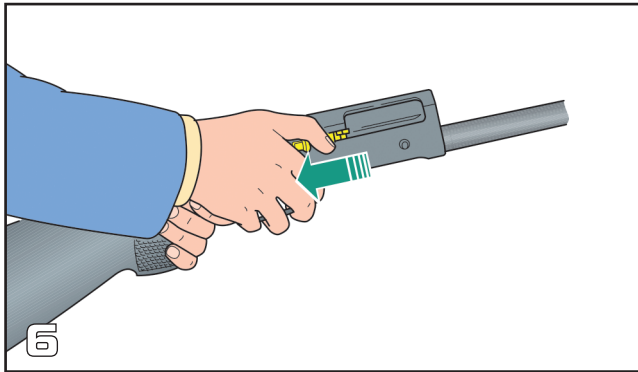
NOTE: before proceeding, you must read and follow the instructions "Magazine tube extension"

3) Slide the forearm off the magazine tube (fig. 5).



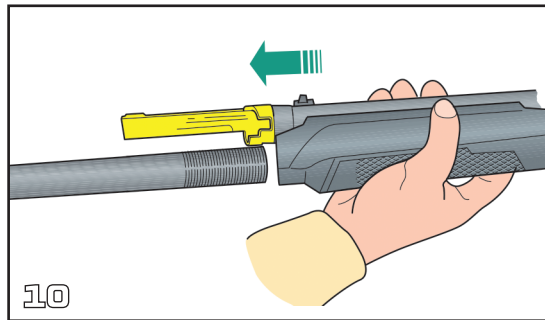
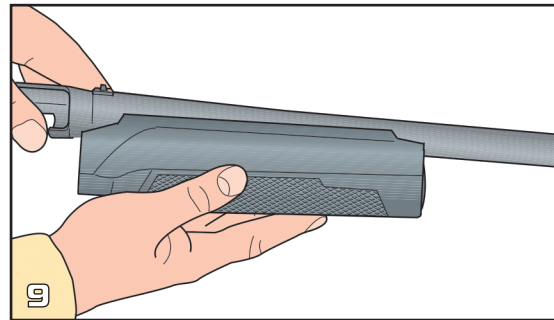
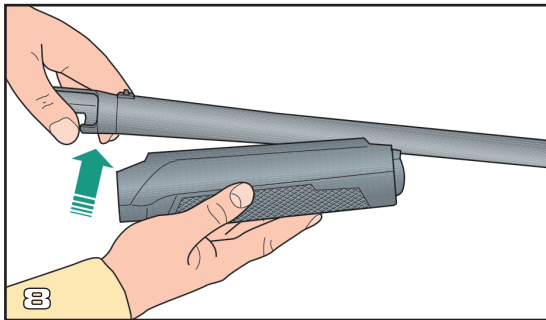
4) Hold the stock-receiver-bolt unit with one hand, while with the other hand retracting the charging handle and bring the bolt rearward into the open position (until locked) (fig. 6).

WARNING: should the bolt fail to lock open, move the cartridge drop lever as indicated by the arrow and repeat the operation (fig. 7).



5) Install the forearm on the barrel. The forearm must first be slid over the barrel guide ring (fig. 8) and then snapped onto the barrel (fig. 9).

6) Hold the stock-receiver-bolt unit with one hand and with the other hand take hold of the previously assembled barrel-forearm sub assembly. Fit the barrel hood extension into the receiver by sliding the forearm over the magazine tube (fig. 10).



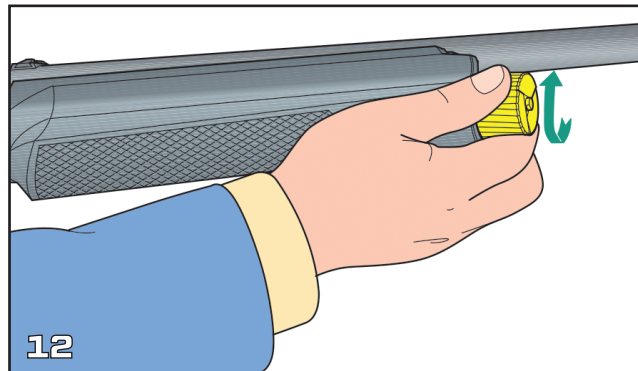
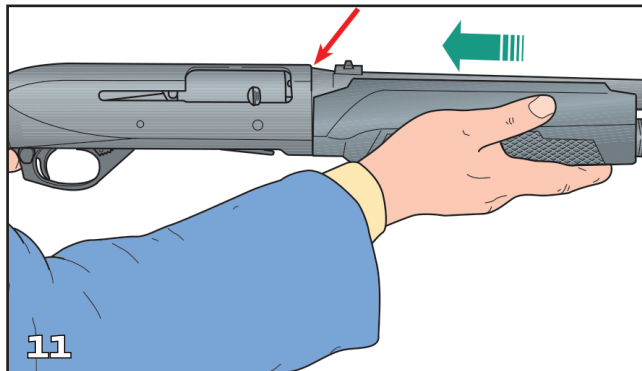
7) As the barrel extension nears the bolt group, carefully align the barrel hood with the top of the protruding bolt head.

8) With the barrel hood resting on the bolt head, and the bolt head fitting into the recess formed into the barrel hood and chamber entrance, slip the barrel into receiver. A metallic click will indicate the barrel is correctly seated (fig. 11).

NOTE: While inserting the barrel hood into the receiver be sure that it does not strike against the bolt locking head.

9) Screw the forearm magazine nut on the tubular magazine and fasten the whole barrel-receiver-forearm together tightly (fig. 12). For models equipped with short tube magazine plus magazine tube extension (magazine tube in two pieces), the magazine tube extension is put on in the same manner as the magazine nut.

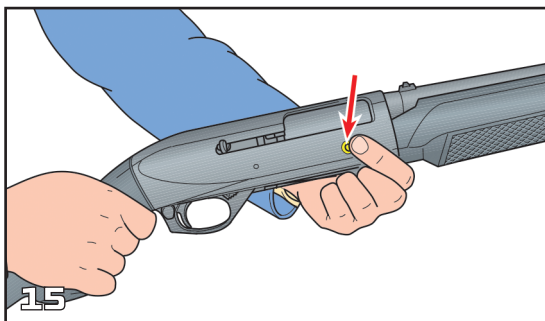
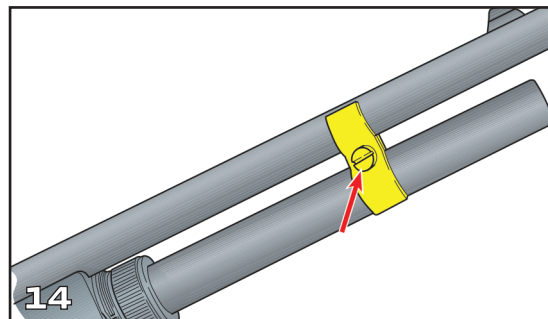
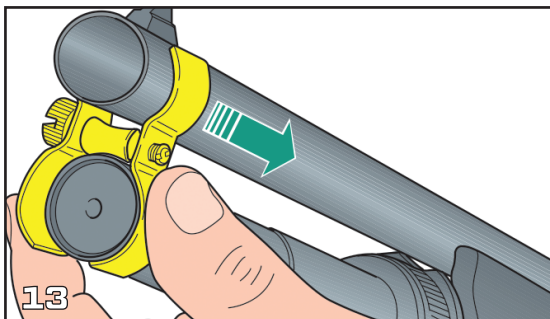
NOTE: Before proceeding, you must read and follow the instructions "Magazine tube extension".



10) Insert the barrel clamp (fig. 13) (for long or extended magazine tube only) over the magazine tube and install in the clamp groove. Secure the clamp by tightening the screw (fig. 14).

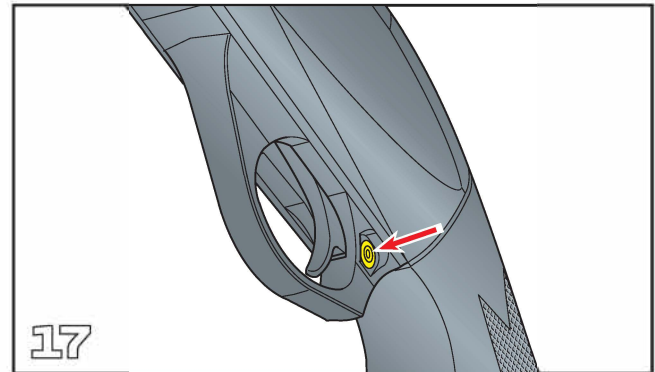
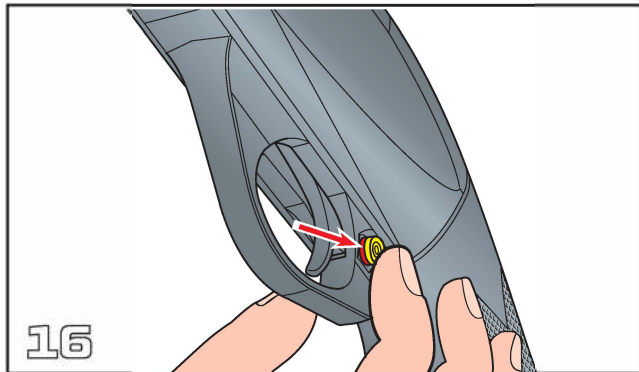
NOTE: During installation, expand the barrel clamp slightly so that it can be inserted over the magazine tube without binding.

11) Close the bolt by pressing the special carrier control button (fig. 15).



GUN SAFETY BUTTON

Press the safety button on the trigger guard from left to right until the red ring, indicating firing mode is no longer visible (figs. 16-17).

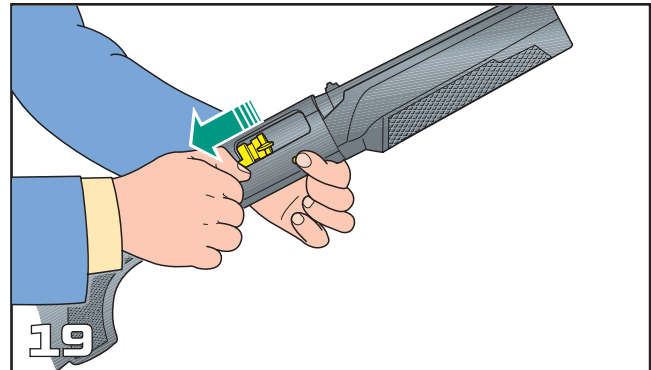
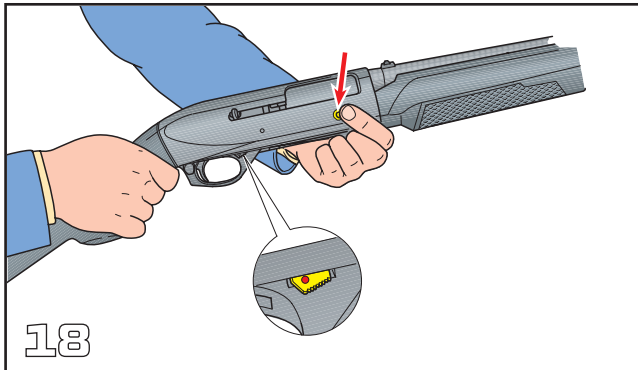


LOADING PROCEDURE

NOTE: Make sure that the shotgun safety button (see "Gun safety button") is engaged and the hammer cocked (so that the magazine latch can retain the cartridges as they are inserted in the magazine).

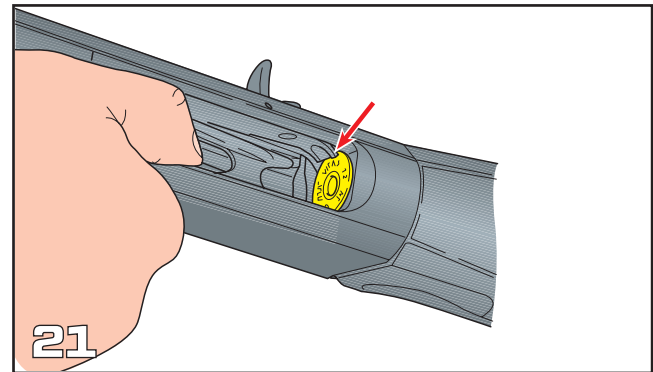
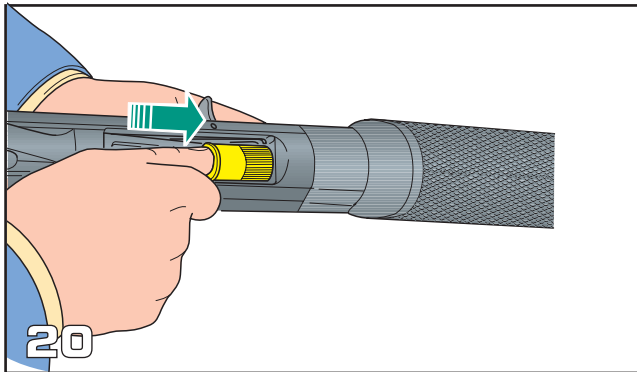
WARNING: For safety reasons, check by opening the bolt to see if the shotgun chamber is unloaded. Then close the bolt again.

1) The red dot on the magazine release lever (indicating that the hammer is cocked) (fig.18) must be clearly visible. To bring lever to this position, press the bolt release button and open the bolt by hand, then bring it to close position again (fig. 19).



2) With the bolt closed and the hammer cocked, roll the gun with the magazine port up and pointing the barrel downwards.

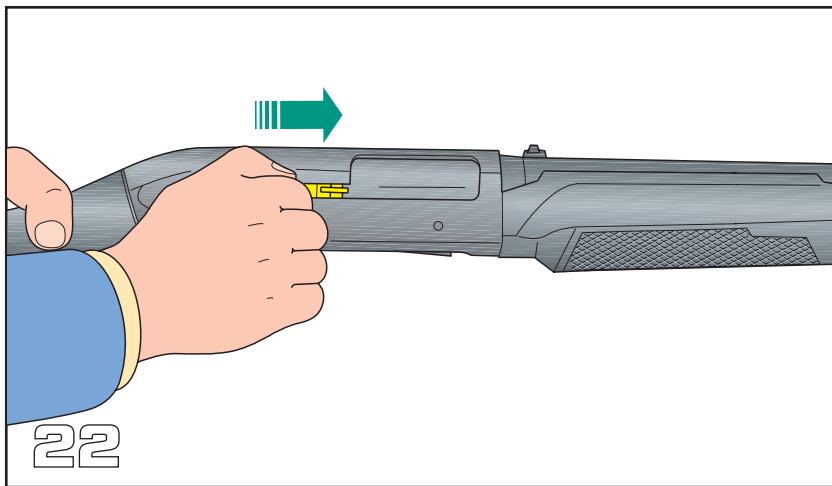
3) Insert a cartridge into the magazine (fig. 20): push it until it is retained by the magazine latch which engages automatically (fig. 21). Repeat the operation until the magazine is fully loaded



NOTE: the gun must be loaded with the hammer cocked so that the magazine latch can retain the cartridges as they are inserted in the magazine. Now the gun cannot be fired unless a cartridge is placed in the barrel, following the procedure:

4) Release the charging handle: the bolt will push the cartridge on the carrier into the chamber and stop in the closed position (fig. 22).

NOTE: during this operation, always point the gun in a safe direction, even though the safety catch is engaged (see "Gun safety catch"). Now the gun is loaded: when the safety button is moved to firing position (red ring visible), the gun is ready for use.



CARTRIDGE REPLACEMENT

(This operation must be carried out with the gun safety button engaged - see "Gun safety button" and barrel pointed in a safe direction) To replace cartridge in the chamber, two procedures can be followed:

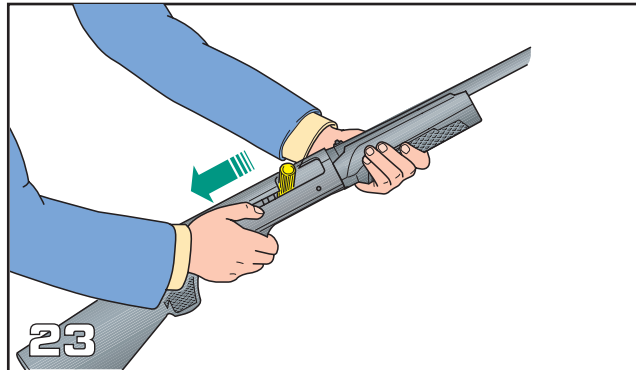
- A) By manual replacement of a new cartridge;
- B) By using the magazine release lever.

A) Manual replacement (when the cartridge is not coming from the magazine)

- 1) Rest the stock on your hip and pull the charging handle to open the bolt: the cartridge in the chamber is extracted and ejected from the gun (fig. 23).
- 2) Insert a new cartridge into the chamber of the barrel through the ejection port window (fig. 22) and release the charging handle to close the bolt again.

B) Using the magazine release lever (when the cartridge is coming from the magazine)

- 1) Rest the stock on your hip and pull the charging handle to open the bolt: the cartridge in the chamber is extracted and ejected from the gun (fig. 23).
- 2) Press the magazine release lever and release the charging handle to close the bolt again. In this way, the cartridge will pass quickly from the magazine to the chamber.

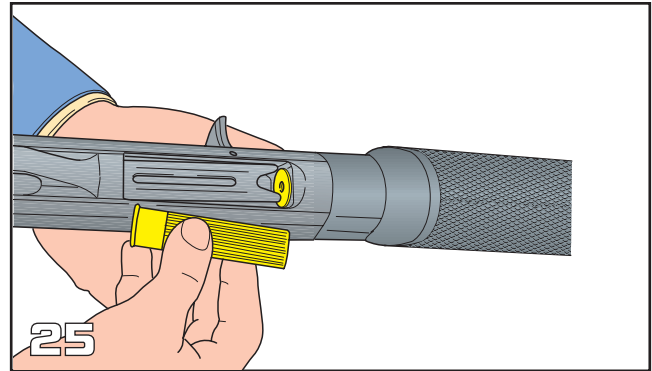
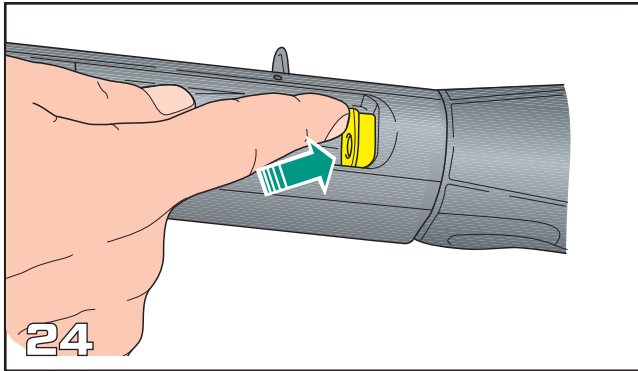


UNLOADING

(This operation must be carried out with the gun safety engaged-"see safety button" and the barrel pointed in safe direction) To unload the shotgun, proceed as follows:

- 1) Engage the safety and pull the charging handle to open the bolt (fig. 21); the cartridge in the chamber is extracted and ejected (fig. 24).
- 2) Gently release the charging handle to close the bolt carrier. (fig. 22).
- 3) Reverse the gun, and, pushing the lifter down, press the magazine release lever from the front with the hand index finger (fig. 24).
- 4) The cartridges will be released one by one into your hand (fig. 25); the magazine release must be pressed for each released cartridge.

WARNING: gun can be unloaded by repeating the operation, as described under point B of the chapter: "Cartridge replacement".



SHOTGUN DISASSEMBLY

FOR CLEANING AND MAINTENANCE

Before starting any operation on your shot-gun, make sure that the chamber, lifter and the magazine are unloaded! (Carefully read the instructions on gun loading and unloading).

Stripping procedure

1) Loosen the magazine nut and remove the barrel (fig. 14) from its seat on the magazine tube only in versions equipped with long magazine tube or with magazine tube extension).

NOTE: during removal, expand the barrel clamp slightly so that it can be slid over the magazine tube without binding.

2) Unscrew the magazine nut and remove from magazine tube. For models equipped with short tube magazine plus magazine tube extension (magazine tube in two pieces), the magazine tube extension comes off simultaneously when unscrewing the magazine nut.

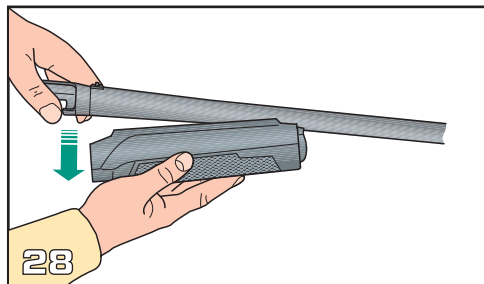
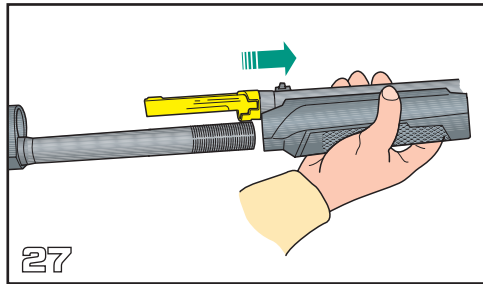
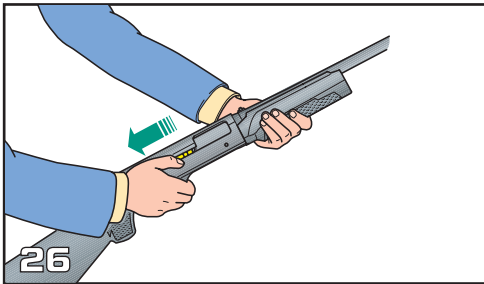
NOTE: before proceeding, you must read and follow the instructions "Magazine tube extension".



3) Take the gun in one hand and with the other open the bolt (fig. 26); should the bolt fail to engage, move the magazine lever as shown and repeat the operation.

4) Hold the grip on the shotgun with one hand, with the other take hold of the barrel forearm subassembly and detach it completely from the receiver by pulling it forward and making it slip off the magazine tube (fig. 27).

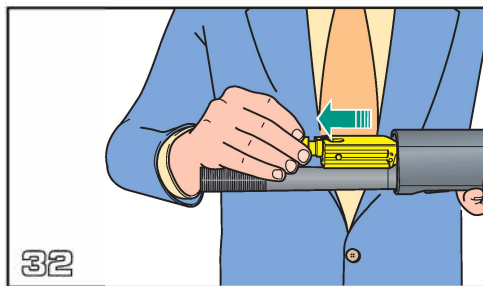
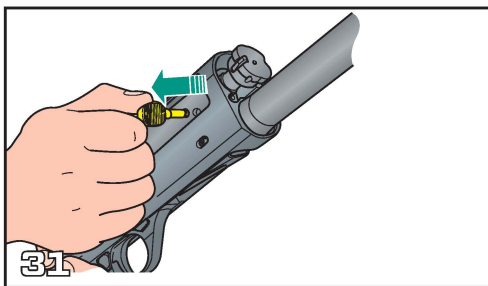
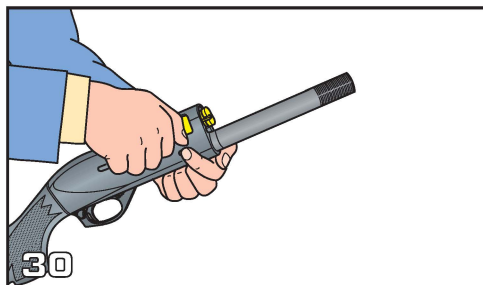
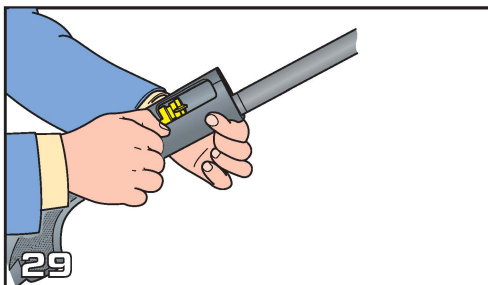
5) Separate the forearm from the barrel, by slipping it out of the barrel guide ring (fig. 28).



6) Take a firm hold of the charging handle and simultaneously press the bolt release button, thus allowing the bolt to move slowly forward until it stops (figs. 29 and 30).

7) Pull the charging handle out with a firm tug (fig. 31).

8) Pull the bolt carrier assembly out of the receiver, sliding it along its guides (fig. 32).

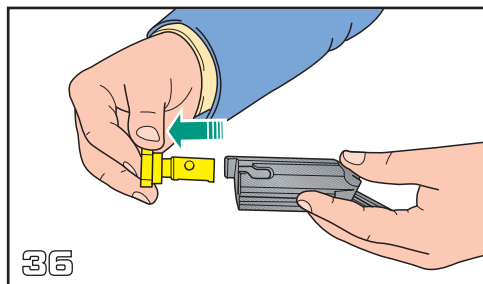
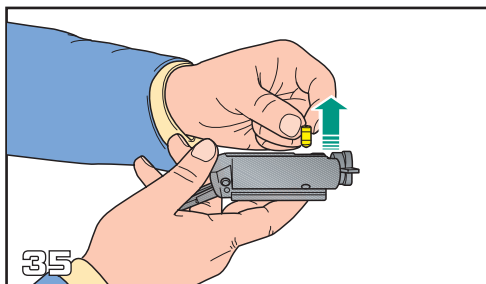
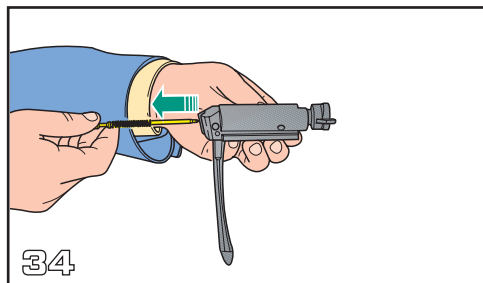
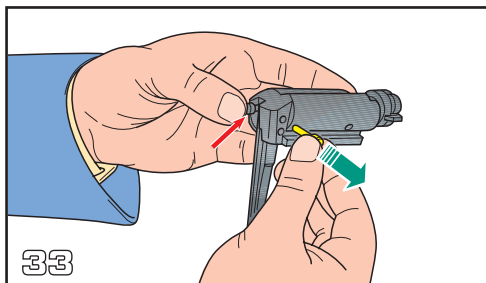


9) Remove the firing pin retaining pin from the bolt assembly, while holding the firing pin and firing pin spring in place (fig. 33).

10) Remove the firing pin and firing pin spring from the bolt (fig. 34).

11) Remove the bolt head cam pin from its seat (fig. 35).

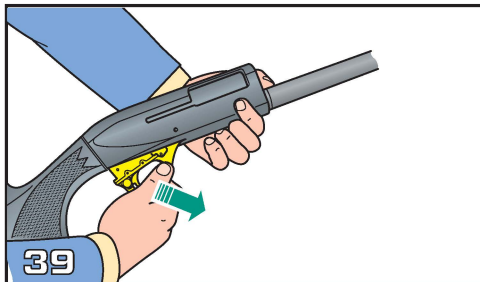
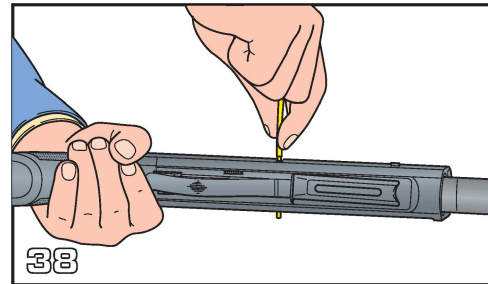
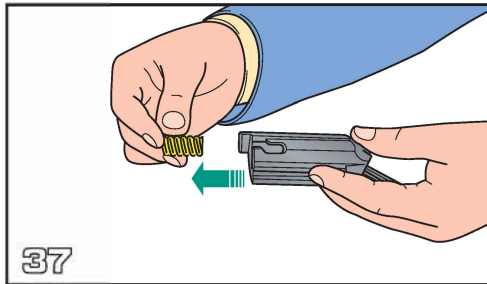
12) Remove the bolt head head from the bolt (fig. 36).



13) Remove the recoil spring from its seat in the bolt carrier(fig. 37).

14) Remove the fire control group pin from the receiver, pushing it from right or left with the point of the firing pin or non marring drift. (fig. 38).

15) Press the bolt release button and extract the trigger guard assembly towards the front (fig. 39). The shotgun is now completely stripped. All the parts that require routine maintenance and cleaning are disassembled

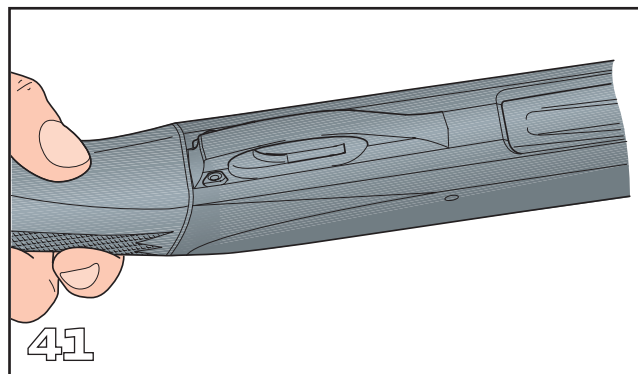
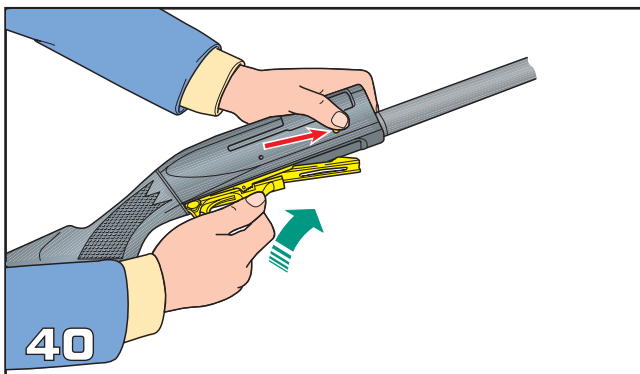


ASSEMBLY

FULL ASSEMBLY AFTER COMPLETE DISASSEMBLY FOR CLEANING

For correct assembly after cleaning and maintenance operations, proceed as follows:

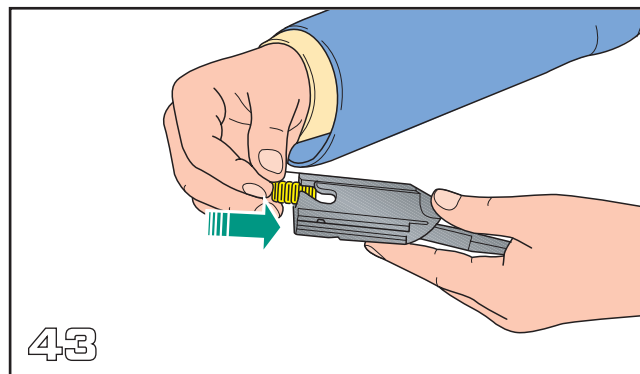
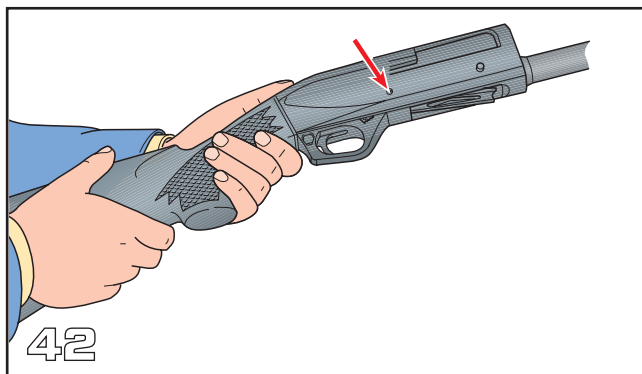
1) Hold the stock-receiver assembly and press the bolt release button so that the whole fire control group is simultaneously fitted into the receiver (hammer must be cocked) and is kept in a slightly advanced position compared to its final position (fig.40). Slightly withdraw the whole fire control group until it is wedged against the back end of the receiver, taking care that the bottom part of the fire control group is flush with the bottom part of the receiver (fig. 41).



2) Push the fire control group into the receiver from the right or left, until it is completely inside (fig. 42).

3) Place the bolt recoil spring in its seat on the bolt (fig. 43).

NOTE: always make sure that the bolt recoil spring is positioned between the cam pin and the bolt itself, in order to avoid a round being fired out of battery.

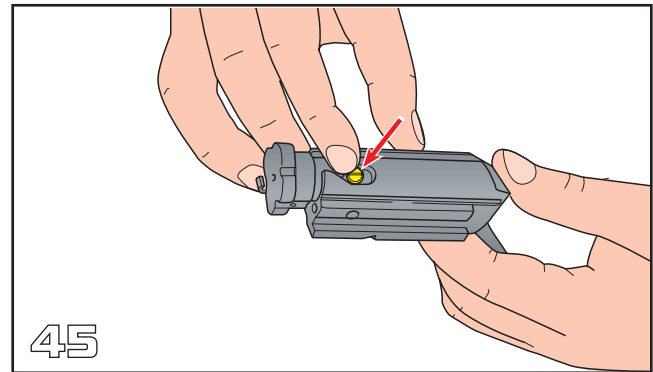
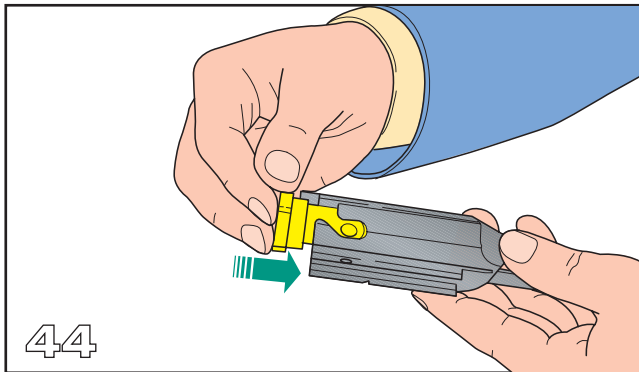


4) Slide the bolt head into the bolt carrier, making sure that the hole on its shaft coincides with the slot on the bolt carrier(fig.44)

WARNING: the slanted surfaces on the bolt head's shaft should not be visible once the bolt head is mounted.

5) Insert the cam pin in its hole on the bolt head's shaft, through the slot on the bolt carrier(fig.45).

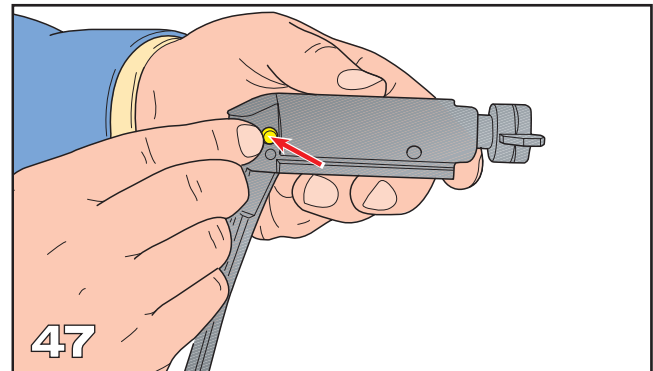
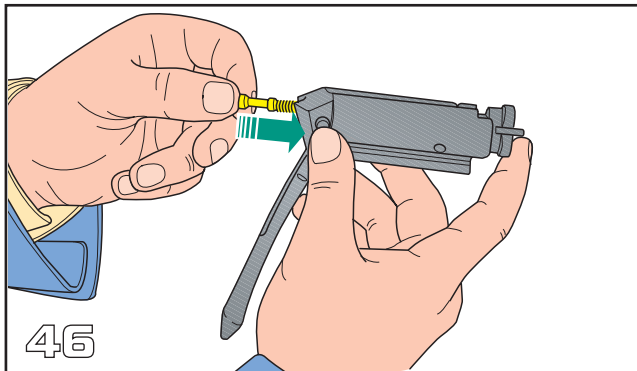
NOTE: the reference line on top of the pin must be visible and aligned with the bolt assembly longitudinal axis (in alignment with the firing pin direction) (fig. 45).



6) Insert the firing pin and the firing pin spring inside the bolt carrier hole (fig. 46).

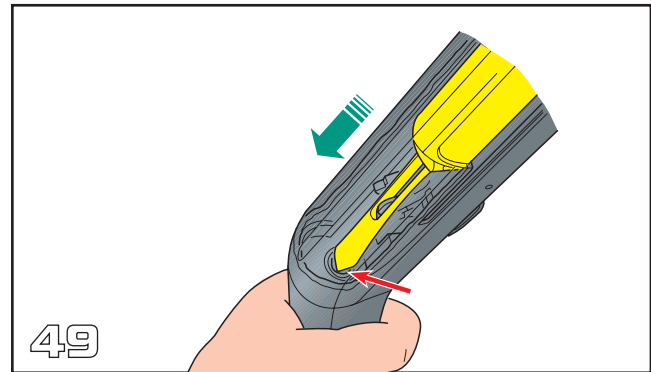
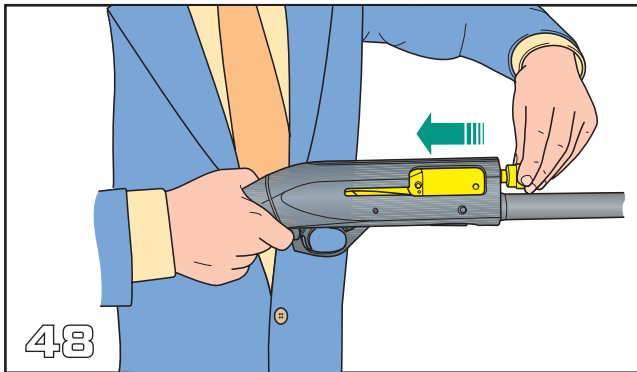
NOTE: Always make sure that the firing pin spring has been properly mounted.

7) Insert the firing pin retaining pin in its seat, so as to block the firing pin (fig. 47).



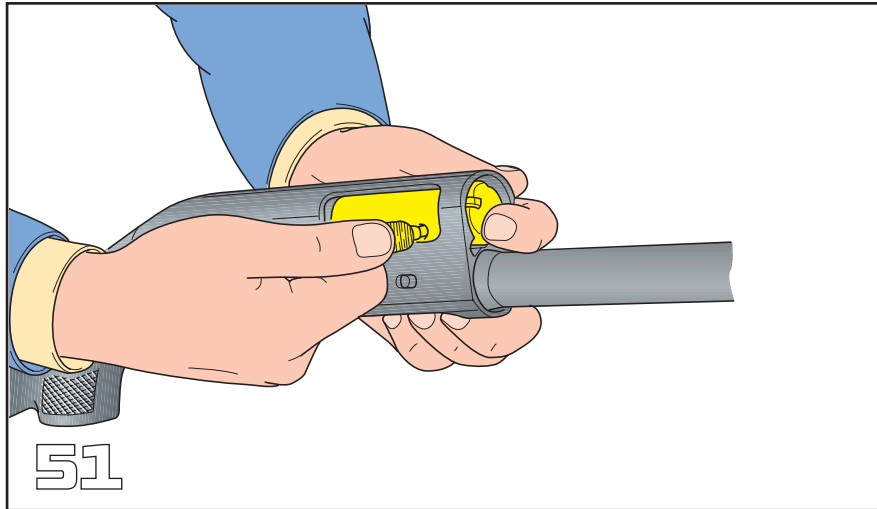
8) Hold the stock receiver assembly horizontally and insert the bolt assembly its slots in the receiver (fig. 48),

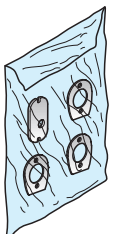
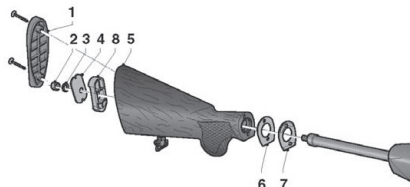
WARNING: make sure that the bolt link slides over the fire control group assembly, positioning it centered on the recoil spring buffer inside the receiver, once the mounting has been completed (fig. 49),



9) Pull back the bolt carrier and insert the charging handle into the bolt carrier group (fig.51).

10) Finish assembling the shotgun by following all the steps (except the first four) outlined under the section on page 5-11.





Drop and cant adjustment

Before beginning any operation whatsoever on your shotgun, always make sure that chamber and magazine have been completely emptied! (Carefully read loading and unloading instructions). The shotgun is supplied with a "drop change kit" which enables you to adjust the original drop the shotgun is supplied with. The kit consists of one stock locking plate (in steel), plus drop change shims three (plastic). Each unit is marked with the corresponding drop letter. The kit enables you to obtain four different drop patterns (as specified in the following table) and two different cants (right hand or left hand).

		L	R
DROP	Z	Z + SX + Z SX	Z + dX + Z dX
	A	A + SX + A SX	A + dX + A dX
	B	B + SX + B SX	B + dX + B dX
	C	C + SX + C SX	C + dX + C dX
	D	D + SX + D SX	D + dX + D dX

Matching instructions: the drop change kits are identified by letters. To ensure a correct drop always match locking plates and shims that have the same letters,

e.g. C - CDX - DX or C - CSX - SX.

DX = Right hand
SX = Left hand



MAINTENANCE AND CLEANING

LUBRICATION WARNING: Firing a shotgun with oil, grease, or other debris partially obstructing the bore may result in damage to the firearm or injury to the shooter and those nearby. Before firing make sure the bore and chamber of the barrel is unobstructed and dry. Never spray or apply lubricant on shotshells. Firing another shotshell behind an obstruction may damage the shotgun and cause death or injury. Only use lubricants properly and sparingly. You are responsible for the proper care and maintenance of your shotgun.

1. Disassemble your shotgun.

2. Using a proper cleaning rod, run a solvent-wetted patch through the bore several times. This will then be followed by running dry patches through the bore to remove any debris or residue.

3. If the bore is leaded to the extent that the above patch cleaning procedure did not remove the lead, then scrub the bore full length with a solvent-wetted brass bristle brush. When the leading is loose then repeat step #2.

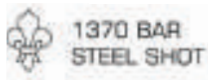
4. The surfaces of bolt carrier, ejector, and inside surfaces of the receiver should be coated very lightly with nonpenetrating lubricating oil.

5. Reassemble the shotgun and wipe the exterior metal surfaces sparingly with an oiled cloth. Swab the bore with an oily patch before storing the firearm.

6. Place the shotgun in a safe, locked storage space where unauthorized persons cannot access the firearm. Never store the shotgun in a leather case as leather attracts moisture even though it may appear dry.

7. Never fire your gun without choke tubes snugly tightened in barrels. Do not over tighten choke tubes. Wipe all exposed metal surfaces with an oiled cloth before storing. Do not squirt or pour oil into the inside mechanism because it may cause deformation.







WARRANTY

At MILITARY ARMAMENT CORP, we believe in the quality of our firearms, and we want you to as well.

Age & wear cannot be covered under warranty, as the mechanical parts and materials that make up firearms eventually wear out. However, defective parts, materials, and workmanship are not acceptable, and we will stand behind our products. We warrant our firearms to be free from defects in performance and workmanship for five years from the date of purchase. If you have a problem that is directly attributable to the quality of our product, it's on us to make it right, shipping and handling included.

However, if you abuse improperly maintain, or alter the internal workings of your MILITARY ARMAMENT CORP firearm in any way, we will not warrant damage that occurs. Likewise, if you use improper or incompatible ammunition or parts, we will not warrant damage that occurs. That includes altering a serial number.

If you have a problem with your firearm, please contact **MAC** directly at (865) 604-6894 or info@milarmamentcorp.com

RETURN WITHOUT REPAIR

If we receive your firearm and determine that its damage is unwarrantable, we will contact you with an explanation and an estimation of your cost to have us repair or refurbish it. If you would rather we simply return your firearm to you, we will cover the cost of shipping to do so.

FREE REPAIR AND RETURN

If your firearm is defective and we determine the defect is warrantied, Military Armament Corp will try to repair it. If we repair your firearm, after doing so we will ship it directly back to you, provided you originally shipped it to us from your address. If your firearm cannot be repaired, we will consider replacing it.

LIMITATIONS ON WARRANTY

Our only responsibility in the case of breach of warranty is repair. MILITARY ARMAMENT CORP shall not be liable for any other damages, including direct, indirect, or consequential damages.

PLEASE NOTE: This warranty gives you specific legal rights, and you may also have other rights, which vary from state to state, as some jurisdictions do not allow limitations on certain damages and warranties.

MILITARY ARMAMENT CORP stands behind the quality of our firearms. while age and wear cannot be covered under warranty, we believe defective parts, materials, and workmanship to be an unacceptable situation. we warrant our firearms to be free from defects in performance and workmanship for one year from the original retail purchase date. if have a problem that is directly attributable to the quality of our product, we will make it right to include shipping and handling. the **MAC** warranty does not cover any issues related to abuse, improper maintenance, the use of incompatible aftermarket parts or any alteration of the internal components. Likewise, damage caused by the use of improper or incompatible ammunition such as reloaded or other non-SAAMI spec ammunition will also void your warranty. additionally, sales outside of the United States, unauthorized repair, and modifications to the firearm to include altering a serial number, shall not be covered under warranty.

MILITARY ARMAMENT CORP LIFETIME SERVICE PLAN

Military Armament Corp is committed to supporting our customers with services that are above and beyond what is expected. Beyond our 1-year warranty, our **Lifetime Service Plan** will repair any defect in material or workmanship for the lifetime of the firearm. The Military Armament Corp Lifetime Service Plan will begin after the 1-year warranty has expired. **The Lifetime Service Plan** covers material defects; and does not include wear items such as cosmetics, grips, magazines, recoil springs or sights. This **Lifetime Service Plan** is offered in addition to the 1-year warranty and is not an extension of the warranty.

IMPORTANT WARRANTY INFORMATION

Military Armament Corp Shotguns are warranted to function with factory produced, SAAMI spec ammunition and the original factory magazine. The use of hand-loads will void your warranty and the Lifetime Service Plan.

If you experience a warranty issue, before sending your firearm please contact us at info@milarmamentcorp.com or via phone (865) 604-6894 for a Return Merchandise Authorization number. No firearms will be accepted without pre-approval and completion of this Return Merchandise Authorization.

To review the full warranty and Limited Lifetime Service Plan, please visit www.milaramamentcorp.com

####

NOTES:



MILITARY ARMAMENT CORP.

114 SHERLAKE LANE SUITE 18 KNOXVILLE, TN 37922

TEL: 865-604-6894 / INFO@MILARMAMENTCORP.COM / WWW.MILARMAMENTCORP.COM